

# Fixtures

## WSI HI-VISION T8 HIGH / LOW BAY FIXTURE

This fixture is designed to be a direct replacement for HID fixtures. It accounts for up to 40% in energy savings. It provides much improved light distribution, reduced maintenance cost, and a safety feature including instant on after power interruption. Lamps are sold separately and we recommend the W259A T8 lamps.

### HI-VISION FLUORESCENT HIGH / LOW BAY (6) LAMP FIXTURE

| Number of Lamps | Order Number | Description      | Volts   | Warranty |
|-----------------|--------------|------------------|---------|----------|
| 6               | HV632-6      | 6L/HV/HB FIXTURE | 120/277 | 2YR      |



### HI-VISION FLUORESCENT HIGH / LOW BAY (8) LAMP FIXTURE

| Number of Lamps | Order Number | Description      | Volts   | Warranty |
|-----------------|--------------|------------------|---------|----------|
| 8               | HV832-6      | 8L/HV/MB FIXTURE | 120/277 | 2YR      |

### HI-VISION OPTIONS

| ORDER NUMBER | Description               |
|--------------|---------------------------|
| PR           | LENS & FRAME FOR HV FIXT  |
| HK           | FIXTURE HOOK              |
| WG           | 8L/WIRE GUARD FOR MV FIXT |
| CP-120V      | CORD & PLUG 120V          |
| CP-277V      | CORD & PLUG 277V          |

## TCP FLUORESCENT HIGH-BAY FIXTURE

The TCP High-Bay fluorescent fixture is a 120/277 volt fixture with a Mirror-Four reflector. All installation options are extra. You will need to add for V-Hooks, cords or other accessories.

| Number of Lamps | Order Number | Description                 | Volts   | Warranty |
|-----------------|--------------|-----------------------------|---------|----------|
| 6               | HVM632-6     | 6 LAMP FLUORESCENT HIGH-BAY | 120/130 | 1 YR     |
| 8               | HVM832-6     | 8 LAMP FLUORESCENT HIGH-BAY | 120/277 | 1 YR     |

### TCP HIGH-BAY OPTIONS

| ORDER NUMBER | Description      |
|--------------|------------------|
| PC6          | 6'CORD (NO-PLUG) |
| 34PK         | 3/4" PENDANT KIT |
| LFC-90       | V-CLIP           |

# Fixtures

## WEATHER-SMART VAPORTIGHT FIXTURE

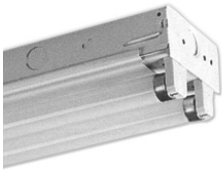
The Weather-Smart fixture is a three lamp vapor-tight fixture with a specially designed lens to provide maximum light distribution. It can be used anywhere there are moisture concerns and it is rated for use down to "0" degrees.



| Number of Lamps | Order Number  | Description        | Volts | Warranty |
|-----------------|---------------|--------------------|-------|----------|
| 3               | AEIT8332VT    | 3L/T8/120V/VT FIXT | 120   | 2 YR     |
| 3               | AEIT8332VT277 | 3L/T8/277V/VT FIXT | 277   | 2 YR     |

## FLUORESCENT FIXTURES BY TYPE

### 2 LAMP T8 STRIP FIXTURE 120-277V



| Number of Lamps | Order Number | Description                    | Volts   | Warranty |
|-----------------|--------------|--------------------------------|---------|----------|
| 2               | 102-32EL     | 2/32 T8 STRIP FIXTURE 120-277V | 120/277 | 1 YR     |

| Number of Lamps | Order Number | Description                      | Volts   | Warranty |
|-----------------|--------------|----------------------------------|---------|----------|
| 2               | 202-32EL     | 2/32 T8 9" WRAP FIXTURE 120-277V | 120/277 | 1 YR     |
| 4               | 404-32       | 4/32 T8 WRAP FIXTURE 120-277V    | 120/277 | 1 YR     |

### 4 LAMP T8 8' TANDEM FIXTURE 120-277V

| Number of Lamps | Order Number | Description                        | Volts   | Warranty |
|-----------------|--------------|------------------------------------|---------|----------|
| 4               | 1T4-32-8EL   | 4/32 8' T8 TANDEM FIXTURE 120-277V | 120/277 | 1 YR     |

### 4 LAMP 32W T8 8' INDUSTRIAL TANDEM FIXTURE 120-277V (WINGS)

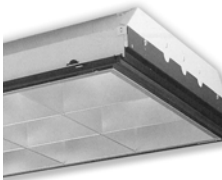


| Number of Lamps | Order Number | Description                                     | Volts   | Warranty |
|-----------------|--------------|---|---------|----------|
| 4               | 6T4-32-8-EL  | 4LAMP/8'/32W/INDUSTRIAL TANDEM FIXTURE 120-277V | 120/277 | 1 YR     |

### LAY IN FIXTURES

| Number of Lamps | Order Number | Description                  | Volts   | Warranty |
|-----------------|--------------|------------------------------|---------|----------|
| 3               | 724GA13323C1 | 2X4/3LAMP/T8/LAY-IN 120-277V | 120/277 | 1 YR     |
| 4               | 724GA14323C1 | 2X4/4LAMP/T8/LAY-IN          |         | 1 YR     |

### DEEP CELL LAY IN FIXTURES



| Number of Lamps | Order Number       | Description                        | Volts   | Warranty |
|-----------------|--------------------|------------------------------------|---------|----------|
| 3               | 24D3GS33218D1K3YF1 | 3 LAMP 18 DEEP CELL LAY IN FIXTURE | 120/277 | 1 YR     |
| 4               | 24D3GS43224D1K4YFI | 4 LAMP 24 DEEP CELL LAY IN FIXTURE | 120/277 | 1 YR     |

# Fixtures

## STONCO 3-WAY FLOOD PAK HID FIXTURES

Stonco's new FloodPak is the ultimate in exterior lighting versatility. It is the perfect blend of performance, flexibility, and architectural design. The FloodPak is three fixtures in one!

### FPS SERIES FLOODPAK (SMALL)

| Watts | Order Number | Description                        | Volts | Warranty |
|-------|--------------|------------------------------------|-------|----------|
| 70    | FPS70NLXL-1  | 70W/HPS/120V/3IN1 FLOOD PAK W/6    | 120   | 1 YR     |
| 100   | FPS100NLXL-1 | 100W/HPS/120V/3 IN 1 FLOOD PAK W/L | 120   | 1 YR     |
| 150   | FPS150NLXL-1 | 150W/HPS/120V 3 IN 1 FLOOD PAK W/L | 120   | 1 YR     |



### FPM SERIES FLOODPAK (MEDIUM)

| Watts | Order Number | Description                     | Volts | Warranty |
|-------|--------------|---------------------------------|-------|----------|
| 100   | FPM100PMAL-8 | 100W/MH/MT/3 IN 1 FLOOD PAK W/L | MT    | 1 YR     |
| 150   | FPM150PMAL-8 | 150W/MH/MT/3 IN 1 FLOOD PAK W/L | MT    | 1 YR     |
| 175   | FPM175MAL-8  | 175W/MH/MT/3 IN 1 FLOOD PAK W/L | MT    | 1 YR     |

### FPL SERIES FLOODPAK (LARGE)

| Watts | Order Number | Description                      | Volts | Warranty |
|-------|--------------|----------------------------------|-------|----------|
| 250   | FPL250MAL-8  | 250W/MH/MT/3 IN 1 FLOOD PAK W/L  | MT    | 1 YR     |
| 400   | FPL400LXL-8  | 400W/HPS/MT/3 IN 1 FLOOD PAK W/L | MT    | 1 YR     |
| 400   | FPL400MAL-8  | 400W/MH/MT/3 IN 1 FLOOD PAK W/L  | MT    | 1 YR     |

### FLOODPAK HARDWARE

| ORDER NUMBER | Description                          |
|--------------|--------------------------------------|
| FPSKNUCKLE   | 1/2" ADJUSTABLE KNUCKLE(FPS-FPM)ONLY |
| FPSARM       | ARM ADAPTER FOR SM&MD FLOODPAK POLE  |
| FPLKNUCKLE   | ADJUSTABLE 2" TENON SLIP-KNUCKLE     |
| FPLARM       | ARM ADAPTOR FOR SHOEBOX TYPE POLE    |

## PHOTO CONTROLS

Automatically turns lights on at dusk and off at dawn.

### EXTERNALLY MOUNTED "AT" SERIES DIRECT WIRE-IN CONTROLS

| Watts | ORDER NUMBER | Description                 | Volts   | Warranty |
|-------|--------------|-----------------------------|---------|----------|
| 2000  | T15          | 2000W/120V/PHOTO CONTROL    | 120     |          |
| 2000  | AT20         | 2000W/105-285/PHOTO CONTROL | 105-285 |          |
| 3000  | AT30         | 3000W/120V/PHOTO CONTROL    | 120     |          |

### EXTERNALLY MOUNTED "TL" SERIES SWIVAL CONTROLS

| Watts | Order Number | Description                             | Volts   | Warranty |
|-------|--------------|---|---------|----------|
| 3000  | TL115        | 1200W/120V/SWIVEL                       | 120     |          |
| 1200  | A105         | 1200W/120V/BUTTON PHOTO CONTROL         | 120     |          |
| 1800  | 8690         | 1800W/105-285V/TWIST LOCK PHOTO CONTROL | 105/285 |          |



# Fixtures

## COMPACT FLUORESCENT DESK, FLOOR, & HANDHELD FIXTURES

These Full Spectrum desk and floor lamps offer a powerful 27-watt compact fluorescent with a Kelvin Temperature of 5500 and a CRI of 90. The lighted magnifying glass offers a 5500 K and 90 CRI 18-watt circleline. This superior product assists in detail and inspection operations.

### ERGONOMIC DESK AND FLOOR LAMP

| Watts | Order Number | Description                         | Volts | Case | Kelvin | CRI | Lumens | Hours | Warranty |
|-------|--------------|-------------------------------------|-------|------|--------|-----|--------|-------|----------|
| 27    | 1415         | 27W/ERGONOMIC DESK LAMP W/VL+ LAMP  | 120   | 6    | 5500   | 90  | 1600   | 10000 | 1 YR     |
| 27    | 1416         | 27W/ERGONOMIC FLOOR LAMP W/VL+ LAMP | 120   | 2    | 5500   | 90  | 1600   | 10000 | 1 YR     |

### REPLACEMENT LAMP

| Watts | Order Number | Description           | Volts | Case | Kelvin | CRI | Lumens | Hours | Warranty |
|-------|--------------|-----------------------|-------|------|--------|-----|--------|-------|----------|
| 27    | 1214         | 27W/CF/4-PIN/VL+ LAMP | NA    | 1    | 5500   | 90  | 1600   | 10000 | 1 YR     |

### ERGONOMIC HAND HELD MAGNIFIER

| Watts | Order Number | Description                     | Volts | Case | Kelvin | CRI | Lumens | Hours | Warranty |
|-------|--------------|---------------------------------|-------|------|--------|-----|--------|-------|----------|
| 18    | 1417         | 18W/T5 5500K HAND HELD MAG.LAMP | 120   | 8    | 6500   | 90  | 1200   | 10000 | 1 YR     |

### REPLACEMENT LAMP

| Watts | Order Number | Description           | Volts | Case | Kelvin | CRI | Lumens | Hours | Warranty |
|-------|--------------|-----------------------|-------|------|--------|-----|--------|-------|----------|
| 18    | 1215         | 18W/T5/5500K CIRCLINE | NA    | 1    | 5500   | 90  | 655    | 12000 | 1 YR     |

### ERGONOMIC 5" CLAMP-ON ROUND MAGNIFIER

| Watts | Order Number | Description                     | Volts | Case | Kelvin | CRI | Lumens | Hours | Warranty |
|-------|--------------|---------------------------------|-------|------|--------|-----|--------|-------|----------|
| 0     | 1418         | 1L/22W/VL/5" ELE.W-OPTICAL LENS | 120   | 1    |        |     |        |       | 1 YR     |

### REPLACEMENT LAMP

| Watts | Order Number | Description           | Volts | Case | Kelvin | CRI | Lumens | Hours | Warranty |
|-------|--------------|-----------------------|-------|------|--------|-----|--------|-------|----------|
| 22    | 1216         | FC22T5/5500K/CIRCLINE | NA    | 1    | 5500   | 90  | 900    | 12000 | 1 YR     |

### ERGONOMIC 7" X 6" CLAMP-ON MAGNIFIER

| Watts | Order Number | Description                      | Volts | Case | Kelvin | CRI | Lumens | Hours | Warranty |
|-------|--------------|----------------------------------|-------|------|--------|-----|--------|-------|----------|
| 26    | 1419         | 2L/13W/VL/WHT.7X6 MAG.W-OPT LENS | 120   | 1    | 5500   | 90  | 1250   | 10000 | 1 YR     |

### REPLACEMENT LAMP

| Watts | Order Number | Description    | Volts | Case | Kelvin | CRI | Lumens | Hours | Warranty |
|-------|--------------|----------------|-------|------|--------|-----|--------|-------|----------|
| 13    | 1288         | CF13DD/VL PLUS | NA    | 50   | 5000   | 90  | 625    | 1000  | 1 YR     |

